

Total Solution 成套方案

Small hydro power station • Overhead transmission line • Substation, including mobile substation and modular substation • Distribution network • Electricity Maintenance • Electricity investment • Telecom tower and accessories

小型水电站 • 输电线路 • 变电站 • 车载式变电站及预装式变电站 • 配网及社区配电 • 电力运维 • 电力投资 • 电信塔及附属设备



Email: sales@hndlpe.com
Office Telephone: 86-0371-55360039
Cell Phone: 86-15938796699(Wechat)
Website: www.hndlpe.com
Address: Building No. 46, ZTE Industrial park, No. 1776 East
Hanghai Road, Zhengzhou City, China, 450016



鼎力 DINGLI



TOTAL SOLUTION FOR ELECTRICITY
电力成套方案供应商

Doing things right at the first time
is the greatest savings

一次就把事情做对
是最大的节约

CONTENTS

目录

- | | |
|--------------------------------------|----------------|
| 1. Company introduction 1 | 1. 公司介绍 1 |
| 2. Members 2 | 2. 公司成员组成 2 |
| 3. Qualification and honor 3 | 3. 资质与荣誉 3 |
| 4. Scope of work 5 | 4. 业务范围 5 |
| > Power generation 7 | > 发电 7 |
| > Substation 9 | > 变电 9 |
| > Transmission line 11 | > 输电 11 |
| > Distribution network 13 | > 配电 13 |
| > Electricity maintenance 15 | > 电力运维 15 |
| > Emergency service 17 | > 应急服务 17 |
| > Telesite 19 | > 电信基站 19 |
| > Concrete pole production line 21 | > 水泥杆塔生产线 21 |
| 5. Service 23 | 5. 服务 23 |
| 6. Typical reference 25 | 6. 典型业绩 25 |
| 7. Global network 27 | 7. 足迹 27 |

HENAN DINGLI was founded in 1963 as a small electric power equipment manufacturer, after more than 50 years' development, DINGLI now is group company dedicated on total solutions for electricity projects covering survey, design, manufacture, complete equipment supply, construction, operations, maintenance, investment and so on. HENAN DINGLI actively devote to power grid construction, participated in all UHV construction projects and made an outstanding contribution to UHV transmission lines of China.

Since 2000, HENAN DINGLI has been actively developing international business, successively built Ecuador, Cambodia manufacturing base, Quito tower design center, Spain, Peru, Chile and other overseas service centers. We have got a number of international certificates, such as ISO certificate covering design, equipment and construction, AWS welding certificate, ASTM system certificate, Chile NCH 203 certificate, Colombia RETIE certificate, Costa Rica material quality certificate, etc. By the end of 2018, the overall proportion of international business is more than 30% of the company's main revenue. We have provided high-quality products and services to more than 100 customers in 33 countries, including the markets of Europe, America, Africa and Southeast Asia. With strong technical support and on-site service capability, HENAN DINGLI has saved a lot of project costs for customers and won their recognition.

河南鼎力成立于1963年, 经过50多年的发展, 现在已经由一家小型电力装备制造企业成长为一家专注于电力成套解决方案的企业集团。公司拥有完整的的生产和服务产业链, 涵盖勘测, 设计, 设备制造, 成套设备供应, 电力工程施工, 运维, 检修以及电力投资等各个业务环节。河南鼎力积极投身电网建设, 作为特高压工程优质供应商, 参与了所有的特高压建设项目, 为中国特高压输电线路事业做出了贡献。

2000年开始, 河南鼎力开始积极开发国际业务, 先后建成厄瓜多尔, 柬埔寨加工基地, 基多杆塔设计中心, 西班牙, 秘鲁, 智利等海外服务中心, 并通过多项国际认证如涵盖设计设备施工的ISO体系认证, AWS 焊接认证, ASTM 系统认证, 智利NCH 203 认证, 哥伦比亚RETIE认证, 哥斯达黎加材料质量认证等。截止到2018年底国际业务综合占比超过公司主营收入30%, 已经为33个国家的100多个客户提供了优质产品和服务, 服务项目遍布欧洲, 美洲, 非洲和东南亚市场, 河南鼎力以强大的技术支持能力和现场服务能力为客户节约大量项目成本, 赢得了客户的肯定。

河南鼎力的企业文化要求所有员工认真倾听客户声音, 为客户提供优质产品和卓越服务, 鼎力人竭诚希望与您合作, 共创未来。



Total Solution and Service

成套和服务板块

Dingli (Ecuador) Pole and Tower Design, Inc.		鼎力 (厄瓜多尔) 杆塔设计有限公司 (美标)
Dingli (Indonesia) Electricity Service Co., Ltd.		鼎力 (印尼) 电力服务有限公司
Henan Zhongdingxin Testing Laboratory Co., Ltd.		河南中鼎信检测技术有限公司
Henan Dadi Electricity Engineering Co., Ltd.		河南大地电力勘察设计有限公司
Henan Dingli Power Equipment Co., Ltd.		河南鼎力电力设备有限公司
Henan Dingli Power Construction Co., Ltd.		河南鼎力电力工程有限公司

Manufacturing Base

制造板块

Henan Dingli Pole and Tower Co., Ltd.		河南鼎力杆塔股份有限公司
Dingli (Ecuador) Instrumental Inc.		鼎力 (厄瓜多尔) 电力装备制造有限公司
Huading Concrete Pole Co., Ltd.		华鼎电气装备有限公司
Xinjiang Huali Steel Tower Co., Ltd.		新疆汇力杆塔金属制造股份有限公司
Bazhou Dingli Tower Co., Ltd.		巴州鼎力杆塔制造有限公司

Qualification and Honor

荣誉与资质证书

ISO Quality Management Certificate (9001, 14001, 18001)

ISO 质量管理体系证书 (三证)

EPC Certificate for Electricity Project below 220kV

220kV 以下电力工程总承包资质

EPC Certificate for Photo-Voltaic Plant Project

光伏发电项目总承包资质

Special Award of Welding in Wandian Dongsong National EHV Demonstration Project

皖东东送特高压示范工程焊接质量特等奖

Certificate of Support Steel Poles in High Speed Railway System

高速铁路钢铁支柱产品认证证书

Photovoltaic Power Plant Design Excellent Enterprise Honor Certificate

光伏电站设计优秀企业荣誉证书

Type Testing Report of 220kV / 500kV / 750kV / 1000kV Steel Pole

220kV / 500kV / 750kV / 1000kV 钢管杆型式试验报告

Raw Materials Certificate by Costa Rica University Material Lab based on ASTM Standard

哥斯达黎加大学材料实验室原材料检验报告

Raw Materials Certificate by Chile University Material Lab based on Nch 203 Standard

智利大学材料实验室原材料检验报告

ASTM Certificate for Raw Materials, Hot Dip Galvanization and Tower Welding

ASTM 标准材料, 焊接, 镀锌检测报告

Q690 Extra High Strength Steel Tower Certificate (Big Span tower for the Yellow River)

Q690 超高强度铁塔验收证书

Helicopter Hoisting Steel Tower Certificate by Erickson American and State Grid of China.

国家电网直升机吊装塔生产基地认证

TLC Certification Perkins and Cummins

铂金斯 康明斯 授权认证单位

Development and Industrialization of Major EHVDC Technical Equipment Sets Won the First Prize of National Science and Technology Progress

超高压直流输电重大成套技术装备开发及产业化项目荣获国家科技进步一等奖

The World's First Generation 110 kV Intelligent Substation in the Urban Center

世界第一代 110kV 城市中心智能变电站

132 Patents for Electricity Product and Technology

132 项电力行业产品及技术专利



ISO Certificates



Certificate for 220kV Steel Pole



Utility Model Patents for Electric Power Products and Technology



Type Testing Report from 220kV-1000kV



ASTM Certificate



EPC Certificate for Electricity Project below 220kV



Columbia RETIE Certificate



Chile Nch 203 Certificate



Costa Rica ASTM Certificate



Patents for Electric Power Products and Technology



TLC Certification Perkins and Cummins



Special Award of Welding



Q690 Extra High Strength Steel Tower Certificate

荣誉和资质

Scope of Work

产品与服务范围



1
Medium &
Small Power
Generation
中小型发电



2
Substation
below 500kV
500kV及以下
变电站



3
Overhead TR
Line below 1000kV
1000kV及以下架空
输电线路



Distribution
Network
below 35kV
35kV及以下配网

4



Hydro Electric Project Ayanunga,
Peru, 2x10.5 MW
秘鲁Ayanunga2x10.5 MW水电站



Marsabit and Wajir Diesel Power Stations in Kazakhstan (10 sets, 6.6kV/Prime 1500KW)
哈萨克斯坦M&W集群式柴油发电站 (10套/6.6kV/Prime 1500KW)

Working scope of power generation:
发电领域工作范围:

- | | |
|--|---------------|
| - Project consultant and complete design | - 项目咨询及整体设计 |
| - Product package supply in power station | - 发电相关产品成套供货 |
| - Product installation or installation supervision | - 项目安装或技术安装指导 |
| - Power station repair and maintenance | - 电站检修和运维 |
| - Upgrade and overhaul of hydro power plant | - 水电站技改和大修 |



Potosi Solar PV Plant, Mexico 300MW
墨西哥波多西300MW光伏电站项目

Substation up to 500kV

500kV及以下变电站

Working scope of substation:

- Traditional substation consultant and complete design
- Modular substation consultant and complete design
- Auxiliary equipment package supply in substation
- Main equipment package supply in substation
- Product installation or installation supervision
- Substation maintenance
- Modular substation leasing

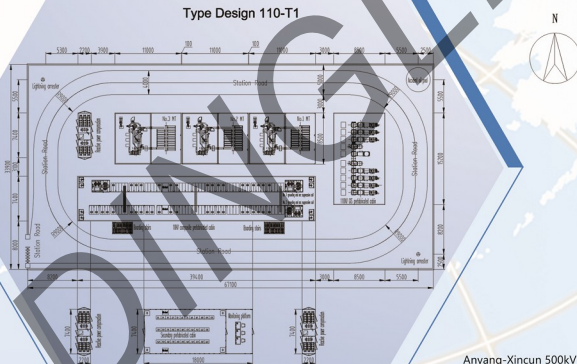
变电领域工作范围:

- 传统型变电站咨询及整体设计
- 预装式变电站咨询及整体设计供货及安装
- 变电站相关辅助设备产品成套供货
- 项目安装或技术指导
- 变电站运维
- 预装式变电站租赁

Modular Substation

- Zhengzhou Xinzheng Airport 110kV
- ▼ 预装式-郑州机场110kV变电站

Typical Design Drawings of 110 kV Modular Substation 110kV预装式变电站典型设计图



Anyang-Xincun 500kV Substation, China 中国安阳辛村500kV输变电项目



SUBSTATION
UPTO
500KV



Transmission Line up to 1000kV 1000kV及以下输电线路



Transmission Line of 220kV in Project
Bukanga Lonzo, Congo
刚果220kV Bukanga Lonzo输电项目



Huainan-Shanghai 1000kV Transmission Line, China
中国淮南-上海 1000kV输电线路项目

Ecuador 230kV Milagros
- Babahoyo Project
厄瓜多尔230kV Milagros
- Babahoyo项目

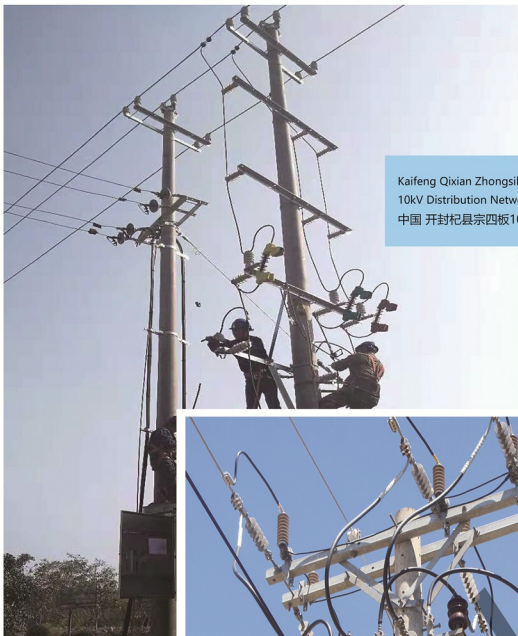


Working scope of transmission line:

- Project consultant and complete design
- Equipment package supply in transmission line
- Product installation supervision
- Tower, conductor, OPGW and accessories installation
- Transmission Line maintenance
- Missing or damaged part emergency supply

输电领域工作范围:

- 项目咨询及整体设计
- 输电相关设备产品成套供货
- 技术安装指导
- 铁塔、导线、光缆及金具串的安装
- 输电线路运维
- 缺损件应急供货



Kaifeng Qixian Zhongsiban
10kV Distribution Network, China
中国 开封杞县宗四板10kV配网项目



MV Project Construction for Rural
Distribution Project in Cambodia
柬埔寨中压农配网项目

Working scope of distribution network:

配电领域工作范围:

- | | |
|--|----------------|
| - Project consultant and complete design | - 项目咨询及整体设计 |
| - Equipment package supply to distribution project | - 配电相关设备产品成套供货 |
| - Product installation or installation supervision | - 项目安装或技术安装指导 |
| - Missing or damaged part emergency supply | - 缺物件应急供货 |



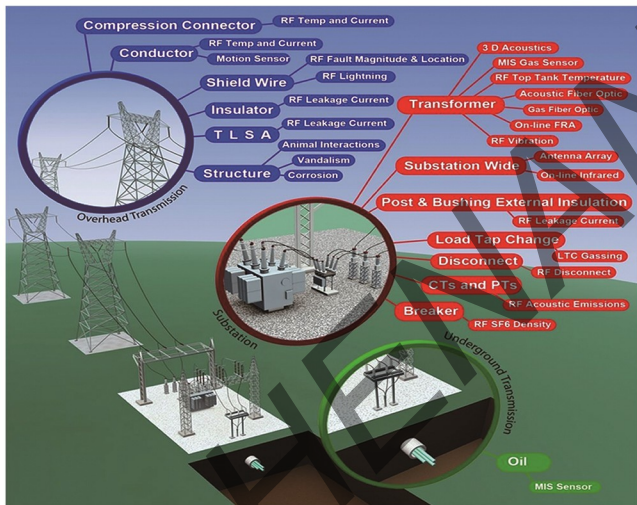
Zhengzhou Jinyicheng Community Power
Distribution, China
中国 郑州锦艺城小区配电

Electricity Maintenance

电力运维

Transmission line condition monitoring and evaluation system 输电线路状态监测与评估系统

- Through battery storage, solar power, wind power and bus bar power to provide reliable power for monitoring system
通过电池储能，太阳能，风能，母线取电供电对塔上监测系统提供可靠供电保障。
- Monitoring the real-time state of the tower-line system through highly reliable sensors
通过系列高可靠性的传感器组，监测塔线系统的实时状态
- Data collection system return the state obtained by the sensor to the data center periodically
数据采集系统将传感器获得的状态周期性回传至数据中心
- Data analysis system to form a comprehensive report on transmission lines
数据分析系统，根据系统的采集数据形成输电线路综合情况报告



ELECTRICITY MAINTENANCE

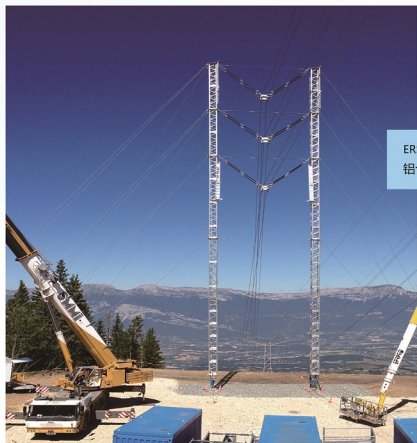


Automatic inspection system for transmission line 输电走廊自动巡检系统

- Target objects: insulator heating; tower, insulator and wire icing; fitting damage; conductor wire breakage
目标检测对象：绝缘子发热，杆塔、绝缘子及导线覆冰，金具损坏，导线断股
- On-line energy storage and charging platform, on which batteries are installed to store energy in idle time, supply power to UAV at work for communication and data transmission
在线储能充电平台，平台上安装蓄电池，在闲时储存电能，工作时给无人机供电以及用于通讯和数据传输
- Draw identification signs on the platform, use laser modeling and GPS positioning to enable UAV to locate and land on the platform
在平台上绘制识别用的标志，并利用激光建模和GPS定位，使无人机能够定位并降落在平台上
- When the UAV charges on the platform, it transmits the data through platform to the monitoring center through the wireless base station established on the ground
无人机在平台上充电时将数据传入平台，之后平台通过地面建立的无线基站把数据回传到监测中心

Emergency Service

电力应急服务



ERS Aluminium Tower and Insulator Strings
铝合金应急塔及绝缘子串



Temporary Load Transfer Plan for Substations
变电站临时负荷转移方案

Working scope of emergency service:

- ERS aluminium tower design, supply and installation
- Design, supply and installation of temporary load transfer plan for substation
- Emergency generation system design, supply and installation
- Mobile/Trailer substation design, supply and installation

EMERGENCY SERVICE



Emergency Generation System
应急发电系统



Mobile/Trailer Substation
车载式变电站

应急服务领域工作范围:

- 铝合金应急塔的设计、供货和安装
- 变电站临时负荷转移方案的制定、供货和安装
- 应急发电系统的设计、供货和安装
- 移动/车载变电站设计、供货和安装

Design Supply and Installation
of T60m 80MPH Telesite,
Guatemala

危地马拉设计、供应货安装T60m 80MPH通讯基站



Nicaragua Design,
Supply and Installation
of Telecom Mono Pole Tower
尼加拉瓜单管电信塔设计供货安装

Ecuador, New-Build 4G Telecom Tower with CLARO
厄瓜多尔CLARO 新建4G电信塔



Working scope of telesite:

- Telesite leasing
- Telesite design, manufacture, installation and package supply including accessories
- Missing or damaged part emergency supply

电信基站领域工作范围:

- 电信基站租赁
- 电信基站设计、生产、安装及成套供货
- 缺损件应急供货

Working scope of concrete pole production line:

- Advanced technology transfer of concrete pole production
- Concrete pole production line design, installation and turnkey
- Worker training
- Work with you till mass production or testing production
- Concrete pole production line investment



水泥电杆生产线领域工作范围:

- 先进的水泥电杆生产技术转让
- 水泥电杆生产线设计、安装、交付
- 技术工人培训
- 一起工作至量产或试生产
- 生产线共同投资



CONCRETE
POLE
PRODUCTION
LINE



Technical support on pre-sales stage. DINGLI has own survey and engineering company with more than 100 engineers. We have special pre-sales engineer to work with customer at early stage of the project.

售前技术支持：鼎力自有设计院，拥有规模超百人的工程师团队，设有专职售前工程师在项目初期为客户提供咨询服务。



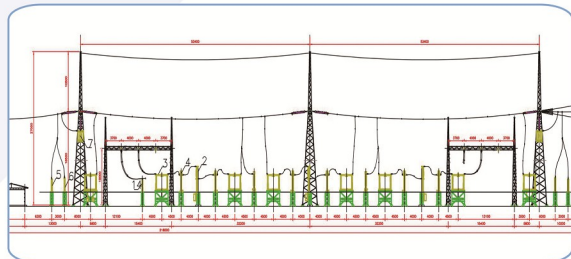
Site assistance in Latin American Market, so far we have sales and service center in Spain, Chile, Bolivia, Peru, Ecuador, Senegal, which will make a fast response for customer.

现场服务和安装指导：目前鼎力在西班牙，智利，玻利维亚，厄瓜多尔，塞内加尔，印度尼西亚建有销售与服务中心，为客户提供快速现场服务。



Warehouse and emergency supply for the spare parts, damage parts and missing parts: DINGLI has built production line in Quito and warehouse for transmission line and distribution network in Ecuador, Bolivia and Senegal with common use spare parts.

仓库及缺损件应急供应：鼎力在厄瓜多尔建有杆塔生产线，专用于拉美市场应急缺件的供应，在厄瓜多尔，玻利维亚，塞内加尔建有输电线路和配网产品常备仓库，并备有常用易耗品。



Supported by both domestic engineering company and Quito tower design center, could provide technical consultant and design service within our scope of work. For Quito tower design center, most of the engineers are local staffs. The design is based on ASTM protocols meantime with GB material standard, which will reduce the weight, and avoid the replacement on the profiles to save the working time.

国内大地设计院及厄瓜多尔杆塔设计中心支持，可提供服务范围内的技术咨询及设计要求。厄瓜多尔杆塔设计中心由当地员工担任主要设计工作。设计结合美标设计协议和国标材料标准，实现杆塔减重和生产过程免代料的双重效果。

CAMBODIA
In 2010, Distribution Network Project in Province of Battambang
柬埔寨
柬埔寨南部地区配网项目, 2010年

KYRGYZSTAN
In 2016, Modular Substation-110kV Substation
吉尔吉斯斯坦
特提德预装式110kV变电站, 2016年

INDONESIA
In 2018, Malea HEPP(2x45MW) Project Product Package Supply
印尼
Malea电气设备与输电线路成套供货, 2018年

ETHIOPIA
In 2014 GDHA Holeta 500kV Substation
埃塞俄比亚
500kV电力变电站, 2014年

HONDURAS
In 2018, Design, Supply and Installation Of Dixon Hill Radar Tower in Roatan
洪都拉斯
设计, 供货罗达迪克森山电信塔

GUATEMALA
In 2014, Design, Supply, Install of 220kV Transmission Line
危地马拉
220kV 输电线路项目, 2014年

ECUADOR
In 2018, LT 230kV Milagros-Babahoyo Project Package Supply
厄瓜多尔
230kV输电线路成套供货项目, 2018年

SENEGAL
In 2011, 90kV Substation for Dakar Iron-Factory
塞内加尔
90kV厂用变电站, 2011年

HONDURAS
In 2015, Installation of the Nacoame Photovoltaic Park - Valle
洪都拉斯
10MW 光伏电站设计安装, 2015年

CHINA
In 2017, CHANGJI-GUQUAN 1100kV DC Transmission Line
昌吉-古泉
1100kV直流输电线路项目, 2017年

GLOBAL TYPICAL PROJECTS
全球重点业绩

KENYA
In 2007, 500kV Substation Equipment Supply and Installation
肯尼亚
500kV 变电站设备供货及安装, 2007年

CONGO
In 2013, Transmission Line of 220kV in Project BUKANGA LONZO
刚果
220kV输电线路, 2013年

BOLIVIA
In 2016, Chaco Tarija 230kV Substation
玻利维亚
230kV电力变电站, 2016年

CHINA
In 2014, Shanxi Yulin 110kV Modular Substation
中国
陕西榆林110kV预装式变电站, 2014年

ZAMBIA
In 2003, Kansanshi Mine 330kV Substation
赞比亚
330kV矿用变电站, 2003年

PERU
In 2016, Hydro Electric Project Ayanuga, 2x10.5 MW
秘鲁
2x10.5MW小水电站, 2016年

ETHIOPIA
In 2015, Dedesa 500kV Substation and Transmission Line
埃塞俄比亚
500kV变电站和配套输电线路, 2015年

CAMBODIA
In 2010, EPC for Phnom Penh Concrete Pole Factory, including running for 6 months
柬埔寨
水泥电杆生产线总承包, 包括6个月运营, 2010年

1. 中国 China

Henan Dingli Pole and Tower Co., Ltd.
河南鼎力杆塔股份有限公司

Huading Concrete Pole Co., Ltd.
华鼎电气装备有限公司

Henan Dadi Electricity Engineering Co., Ltd.
河南大地电力勘察设计有限公司

Henan Dingli Power Construction Co., Ltd.
河南鼎力电力工程有限公司

Xingliang Hulli Steel Tower Co., Ltd.
新钢汇力杆塔金属制造股份有限公司

Bazhou Dingli Tower Co., Ltd.
巴州鼎力杆塔制造有限公司

Beijing Sales and Service Center
北京销售和服务中心

Shanghai Sales and Service Center
上海销售和服务中心

Henan Dingli Power Equipment Co., Ltd.
河南鼎力电力设备有限公司

Henan Zhongdingxin Testing Laboratory Co., Ltd.
河南中鼎检测技术有限公司

2. 柬埔寨 Cambodia

Cambodia Phnom Penh Factory
柬埔寨金边工厂

3. 西班牙 Spain

Madrid (Spain) Sales and Service Center
西班牙马德里销售和服务中心

4. 塞内加尔达喀尔 Dakar Senegal

Senegal (Dakar) Sales and Service Center
塞内加尔达喀尔销售和服务中心

Senegal (Dakar) Spare Parts Warehouse
塞内加尔达喀尔备件仓库

5. 厄瓜多尔基多 Quito Ecuador

Quito (Ecuador) Steel Tower Design Center (ASTM Standard)
厄瓜多尔基多塔架设计中心 (美标)

Quito (Ecuador) Steel Tower Emergency Production Line
厄瓜多尔基多塔架应急供应中心

Quito (Ecuador) Raw Material and Spare Parts Warehouse
厄瓜多尔基多原材料和备件仓库

6. 秘鲁利马 Lima Peru

Lima (Peru) Sales and Service Center
秘鲁利马销售和服务中心

7. 玻利维亚科恰班巴 Cochabamba Bolivia

Cochabamba (Bolivia) Raw Material and Spare Parts Warehouse
玻利维亚科恰班巴原材料和备件仓库

8. 智利圣地亚哥 Santiago, Chile

Santiago (Chile) Sales and Service Center
智利圣地亚哥销售和服务中心

9. 印度尼西亚雅加达 Jakarta, Indonesia

Indonesia (Jakarta) Sales and Service Center
印度尼西亚销售和服务中心

📍 stand for DINGLI overseas service center

📍 代表鼎力海外服务驻点所在国

📍 stand for DINGLI overseas reference

📍 代表鼎力海外业绩所在国